

Kona Storm 6.1

Three way horn loaded passive system



Introduction

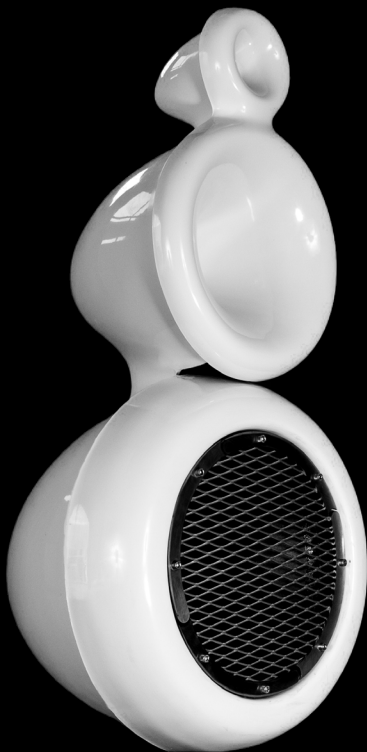
Kona 6.1 is a three-way passive horn-loaded system with extended low-frequency direct emission components. The main use is as DJ Monitor when coupled to a subwoofer as our Ovoid 18. Professional HI-PRO system designed to seamlessly integrate with dedicated transducers, built from high resistance composite materials for elevated sensitivity, dynamics, and definition. Wide-angle coverage of a highly controlled sound field, and the ability to reach high levels without perceptible distortion. The system is characterized by high-end audio quality and can reach elevated sound pressures. A pair of full-frontal horns manage the high-mid frequency range. The high range horn is characterized by a special high-end derivation design. The long and complex development allows for a wide dispersion without compromising a powerful sonic loading. The mid-horn has a unique design that creates an extraordinary efficiency and sensitivity. This allows for excellent dynamics that distinguish the entire system from the first listen. The extended low-frequency direct emission component is characterized by a light structure with a highly resistant ovoid shell containing a 12" woofer with a range of 100-500 Hz and high sensitivity. The 12" LF driver features a water-resistant cone. Components such as the speakers, woofers, and compression drivers all represent world-class quality, without commercial or technological compromises. Thanks to its elevated sensitivity, the system requires limited amplification on power. The Kona 6.1 system is manageable through a dedicated specific passive crossover filter, no compromise design, to get the best performance. There are 2 choices about Xover: High Power cod. XHPKO : when high power is the main necessity, Kona used as PA system, for example. High-End Quality cod. XHEQKO : when the main focus is using Kona close to the listener, as Monitor for example A Full Fat audio FFA 6000 (+ external DSP) is the recommended 2 channel amplifier for this solution. It needs a subwoofer to have a full range system

Features

- High-end audio quality
- Perfect for monitor use
- High power sound
- Huge expandability of performance in perceived power with subwoofer integration
- Extreme sensitivity
- Unbeatable listening dynamics
- Perfect efficiency at all levels of listening
- Perfect adaptability to any musical preference
- Faithful and transparent reproduction at all frequency levels
- Heavy duty, highly resistant to scratches and bumps
- Weather resistance
- Built with high-strength and stiffness composite materials
- Easy to repair and maintain
- Cutting edge technical design
- Unbeatable lightness for easy transport
- Simple installation either freestanding or suspended
- Customizable color and surface finish
- Simple acoustic calibration

Applications

Powerful stage monitor for DJs and studio monitor
Small club performances
Mid to small-scale events
Sophisticated intimate live events
Max Size of audience within the range of dispersion
Indoor 400
Outdoor 300
(Recommendations vary depending on the quantity and type of subwoofer)



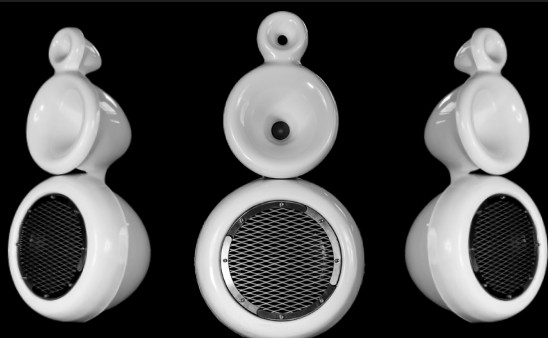
Architectural Specifications

The loudspeaker system Kona 6.1 is a passive three-way system with extended low-frequency direct emission components. Built from high-quality composite materials. Heavy-duty, highly resistant to scratches and bumps. Highly resistant to rain and sun. All metal parts are built-in stainless steel. Mid-low frequency direct emission component is characterized by a light structure with a highly resistant ovoid shell containing a 12" woofer with a range of 100-500 Hz and sensitivity of 100dB 1W/1m, continuous power handling 800 W. Medium frequencies: full frontal round horn, equipped with a 2" compression driver; continuous power handling at 160 W; sensitivity (coupled to the horn) of 110 dB 1W/1m. High frequencies: horn equipped with a 1" compression driver; continuous power handling 140 W; sensitivity (coupled to the horn) 109 dB 1W/1m. The loudspeaker system Kona 6.1 is managed passively by a specific crossover filter. The frequency response of the system managed by the dedicated passive filter in a neutral environment is linear and uniform, so it does not need equalization correction. Continuous power handling of this passive filter is 1000 W 4 Ohm with amplifier 2 Ohms stable. A Full-Fat audio FFA 6000 is the recommended amplifier. The suspension of the system can easily be achieved through chains or cables in steel or synthetic technical fiber. The system is equipped on request with rings and suspension eyebolts. The suspension loads are very small for the suspension points. You can refer to the weights indicated in the table (we recommend a multiplicative safety factor in operation equal to 5). Subwoofers sold separately. Size of the public served in the range of dispersion: indoor 400pp, outdoor 300pp (or more), recommendations vary depending on the quantity and type of subwoofer and musical preferences. This system is especially recommended for use as a stage monitor for DJs, in those situations where the performance of the highest quality is required, or great sound pressure.

Warning:

this is a professional audio system with very high efficiency and sensitivity with acoustic emissions that could potentially cause hearing damage. Installation and use intended for experienced and qualified personnel. The setting of safety DSP devices with a limiter function is recommended.

TYPE	Three way passive horn loaded with extended low frequency direct emission component
FREQUENCY RESPONSE	100 Hz - 18 KHz
TOTAL SENSITIVITY	100 dB 1W/m with passive crossover 100 dB 1W/m for mid-high
LOW FREQUENCY	12" Low woofer 8 Ohm 400 W nominal 800 W peak
MEDIUM FREQUENCY	2" (50 mm) MF compression driver 8 Ohm 80 W nominal 160 W peak
HIGH FREQUENCY	1" (25 mm) HF compression driver 8 Ohm 70 W nominal 140 W peak
NOMINAL IMPEDANCE	4 Ohm with three way passive crossover
POWER HANDLING	1000 W 4 Ohm with amplifier, 2 Ohm stable
MANAGE	2 Ch amplifier to a couple of Kona loudspeakers (passive crossover provided, for each Kona)+DSP to match to subwoofer. High-pass filter @100Hz, 24 dB/oct. LR
RECOMMENDED AMPLIFIER	Full Fatt Audio FFA 6000 with external DSP to match to subwoofer
DISPERSION	60° horizontal, 60° vertical
CONSTRUCTION MATERIALS	Fiber-reinforced composite, stainless steel
FINISH	all ral color and texture on order
PROTECTIVE GRILLES	Kona is usually sold with this grid made of stainless steel to protect the 12" mid bass, as standard
CONNECTORS	1x Neutrik NL8FC or custom preference
DIMENSIONS (with support)	(W) 470 mm (H) 900 mm (D) 440 mm (W) 18,5 inch (H) 35,4 inch (D) 17,3 inch
WEIGHT	20 Kg (44 lb)



Pequod Acoustics Phone: +39 055 66 43 46

via del Madonnone, 25 Florence. Italy Mail: info@pequodacoustics.com Web: www.pequodacoustics.com

